

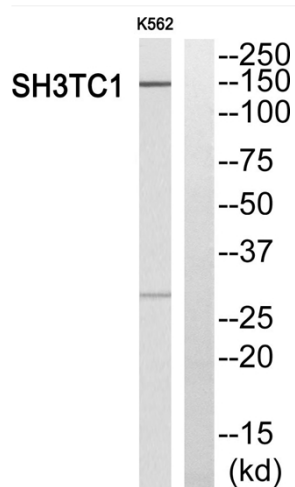


SH3TC1 Polyclonal Antibody

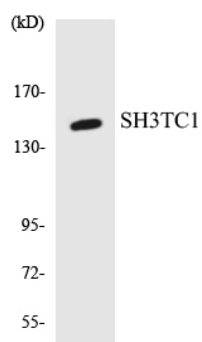
Catalog No	YP-Ab-12804
Isotype	IgG
Reactivity	Human;Rat;Mouse;
Applications	WB;ELISA
Gene Name	SH3TC1
Protein Name	SH3 domain and tetratricopeptide repeat-containing protein 1
Immunogen	The antiserum was produced against synthesized peptide derived from human SH3TC1. AA range:391-440
Specificity	SH3TC1 Polyclonal Antibody detects endogenous levels of SH3TC1 protein.
Formulation	Liquid in PBS containing 50% glycerol, 0.5% BSA and 0.02% sodium azide.
Source	Polyclonal, Rabbit,IgG
Purification	The antibody was affinity-purified from rabbit antiserum by affinity-chromatography using epitope-specific immunogen.
Dilution	Western Blot: 1/500 - 1/2000. ELISA: 1/10000. Not yet tested in other applications.
Concentration	1 mg/ml
Purity	≥90%
Storage Stability	-20°C/1 year
Synonyms	SH3TC1; SH3 domain and tetratricopeptide repeat-containing protein 1
Observed Band	150kD
Cell Pathway	
Tissue Specificity	Eye,Liver,Spleen,Thymus,
Function	similarity:Contains 1 SH3 domain.,similarity:Contains 9 TPR repeats.,
Background	similarity:Contains 1 SH3 domain.,similarity:Contains 9 TPR repeats.,
matters needing attention	Avoid repeated freezing and thawing!
Usage suggestions	This product can be used in immunological reaction related experiments. For more information, please consult technical personnel.



Products Images



Western blot analysis of SH3TC1 Antibody. The lane on the right is blocked with the SH3TC1 peptide.



Western blot analysis of the lysates from RAW264.7 cells using SH3TC1 antibody.